

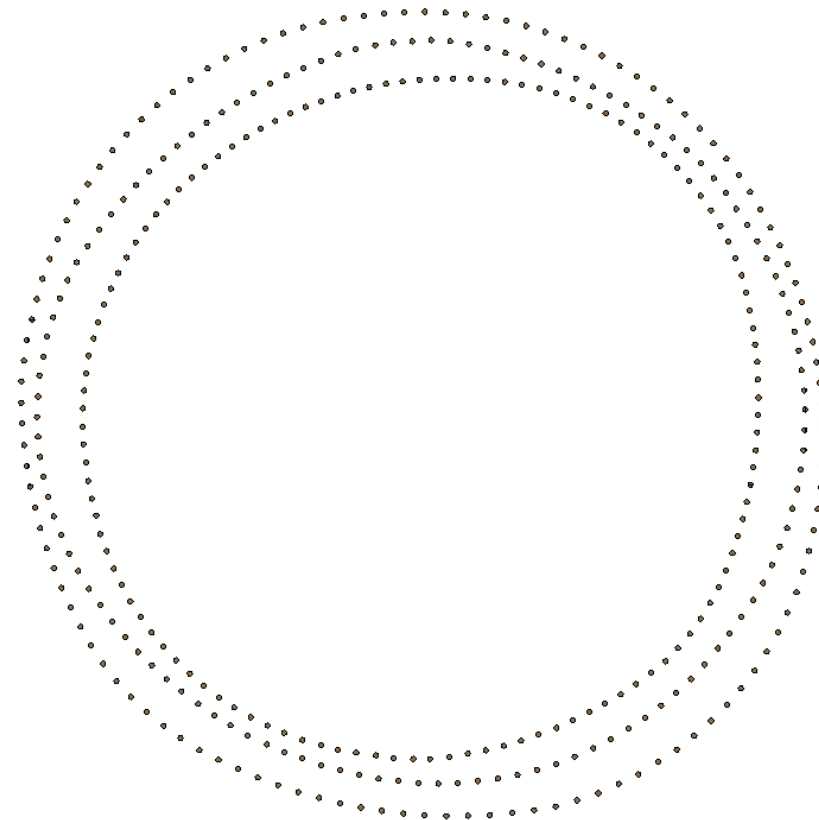
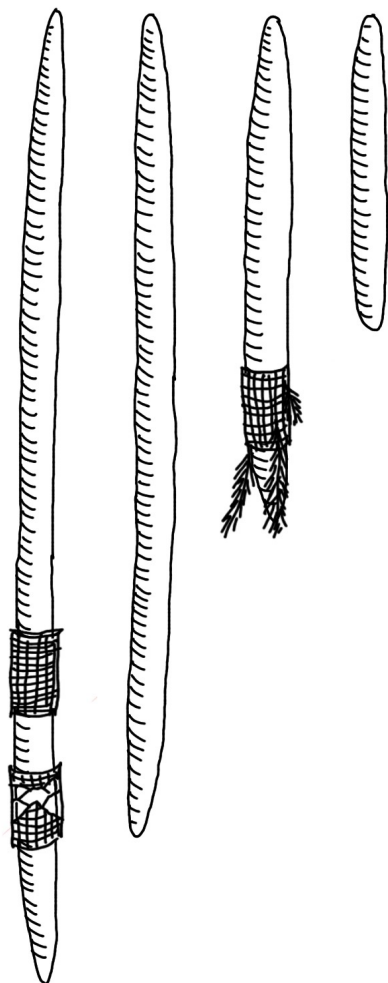
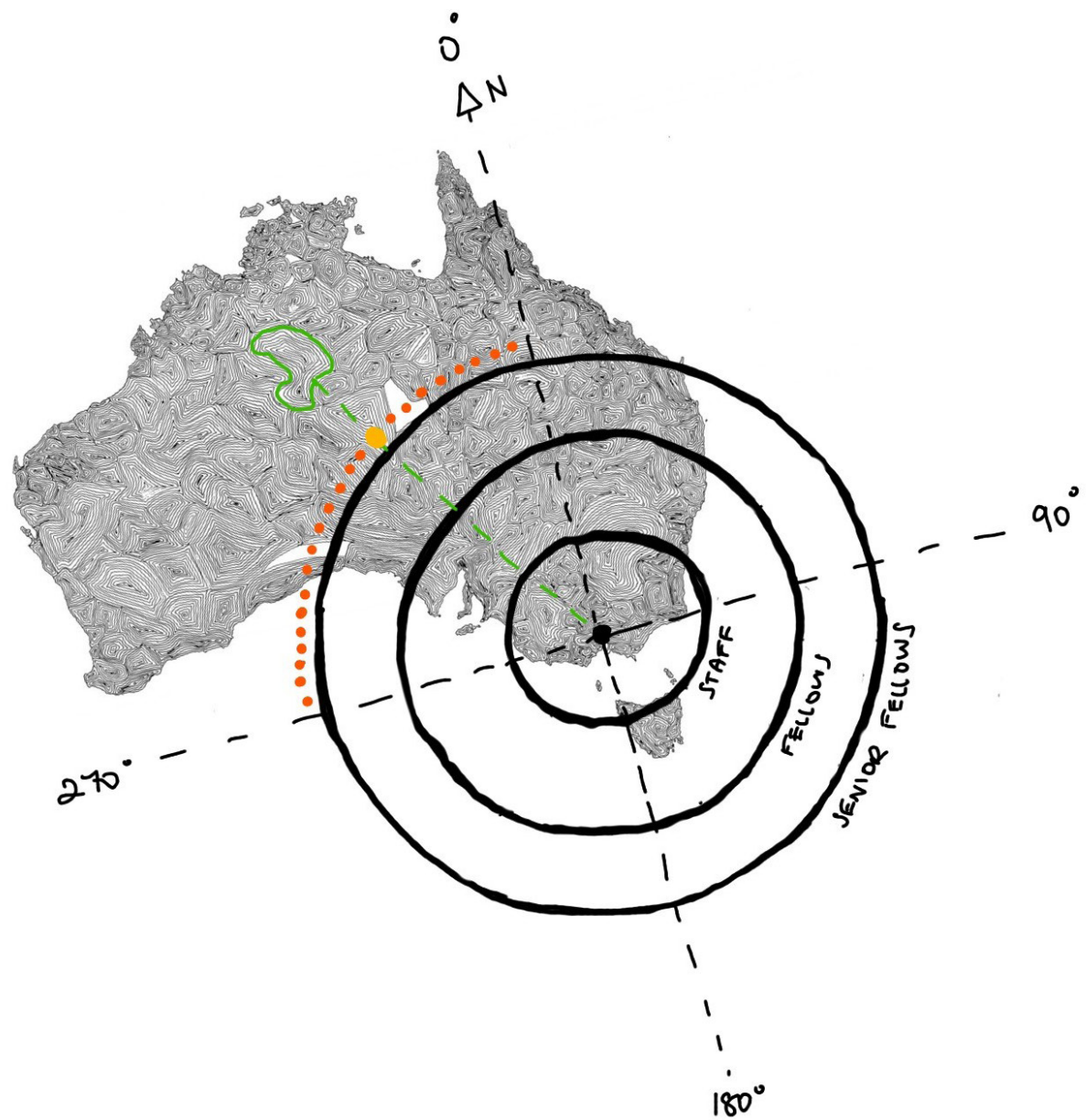
JCB
Designing with timber



Designing with Country









Designing for
sustainability





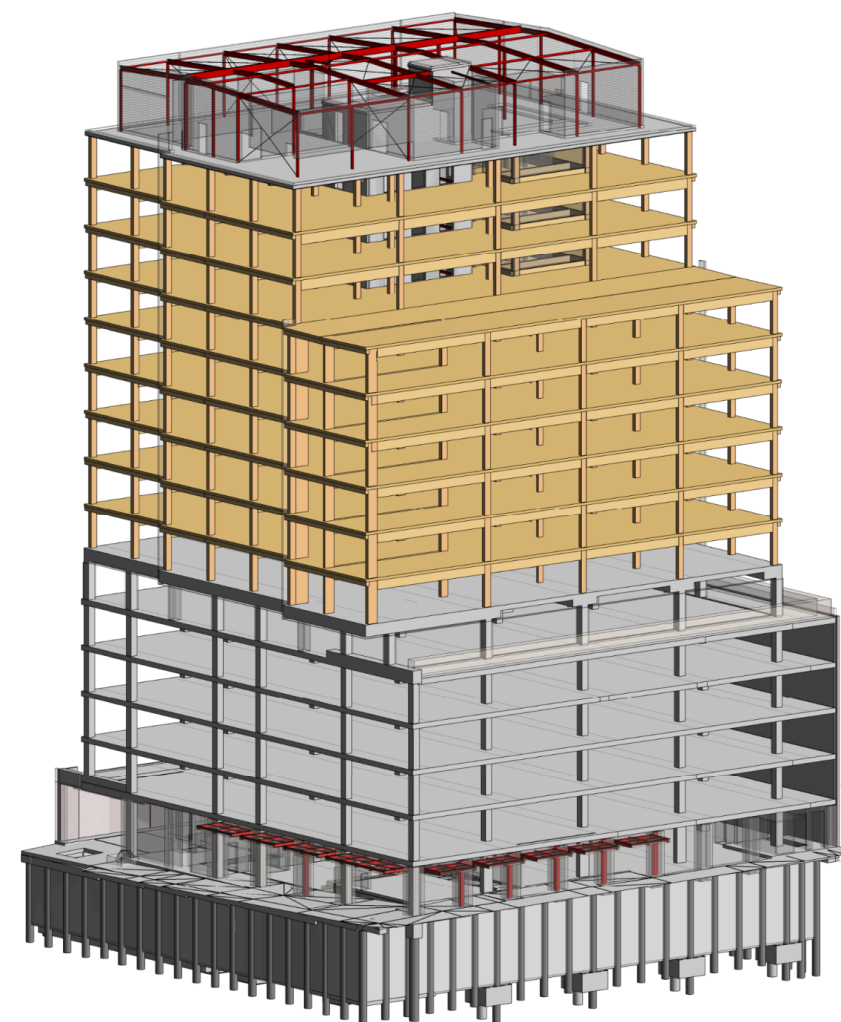
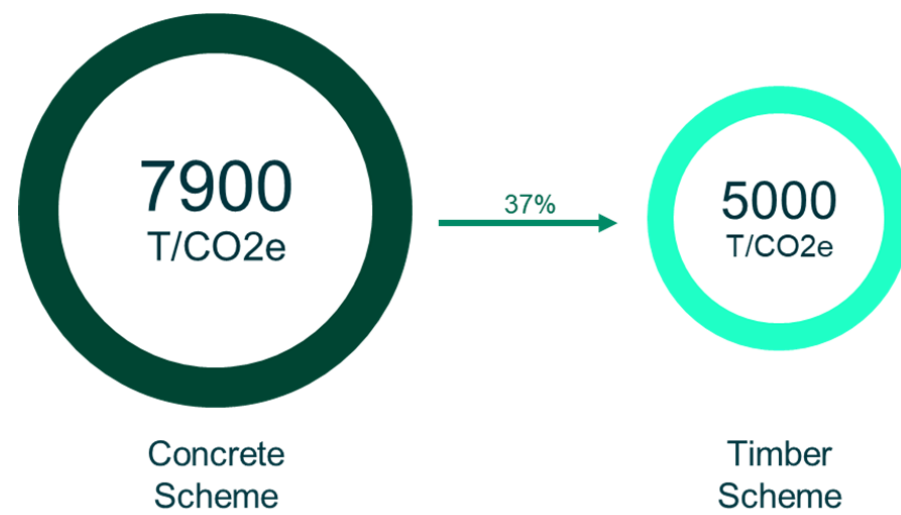
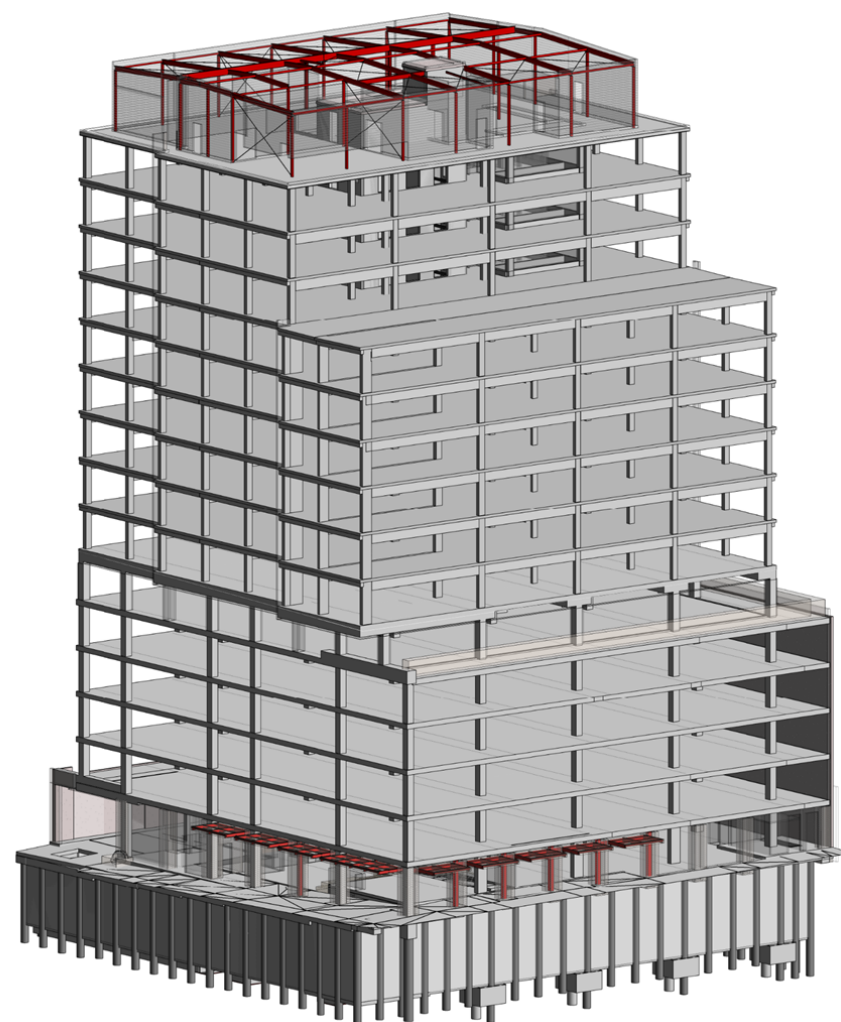












AECOM Life Cycle Analysis

36 Wellington St Collingwood - Integrated Approach









Designing for context



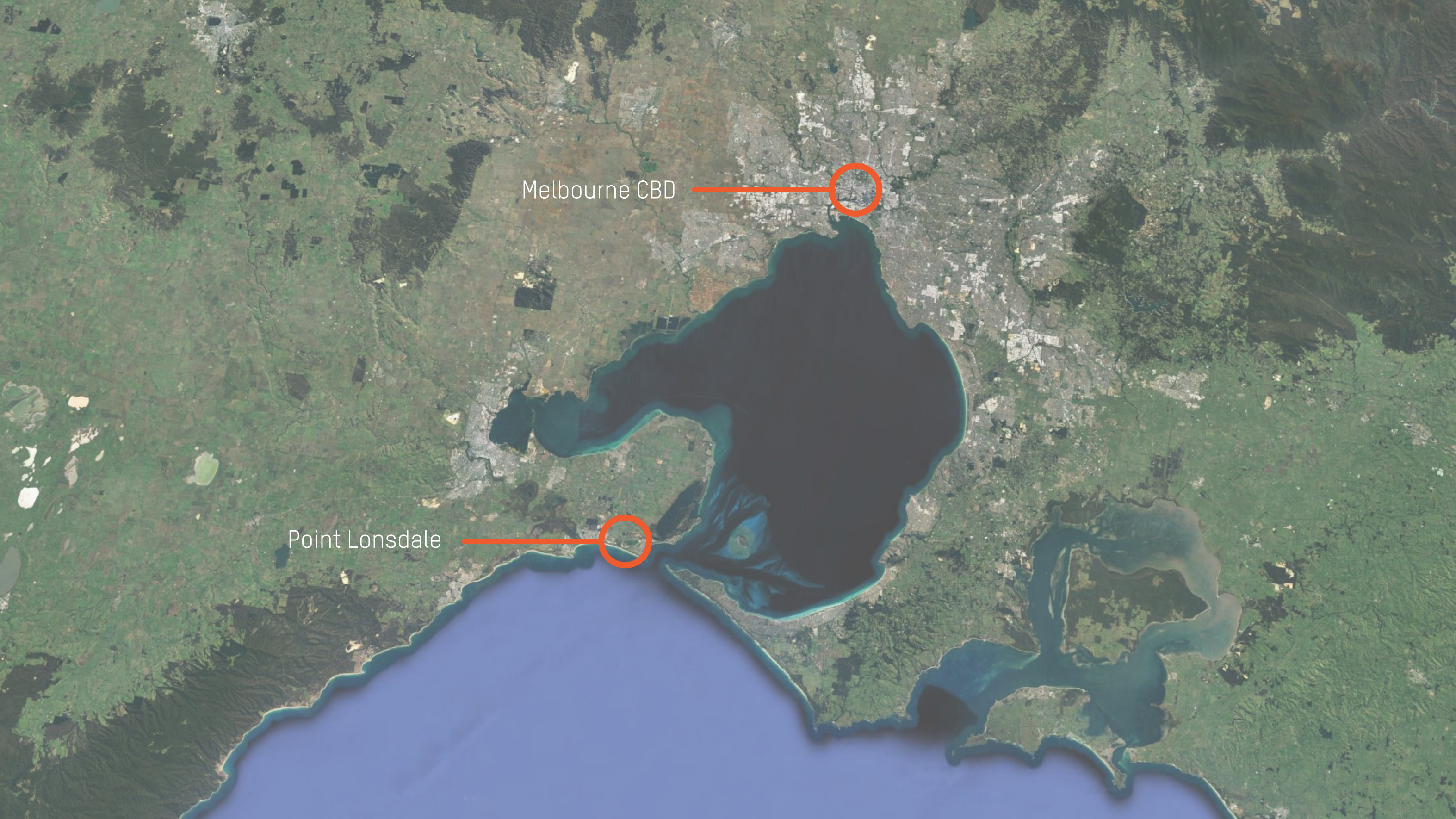






Point Lonsdale Surf Life Saving Club





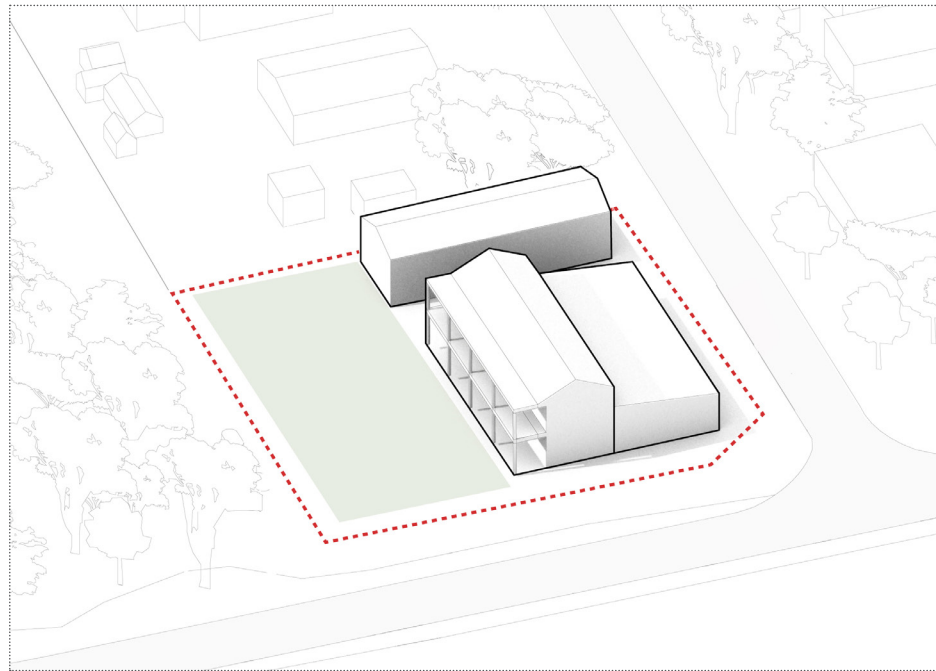
Melbourne CBD

Point Lonsdale

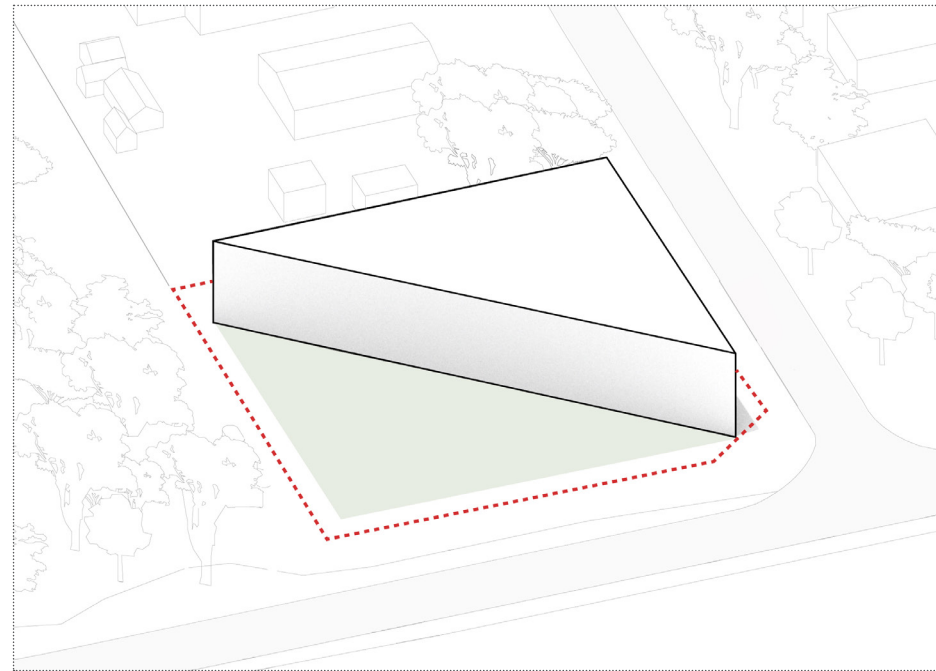




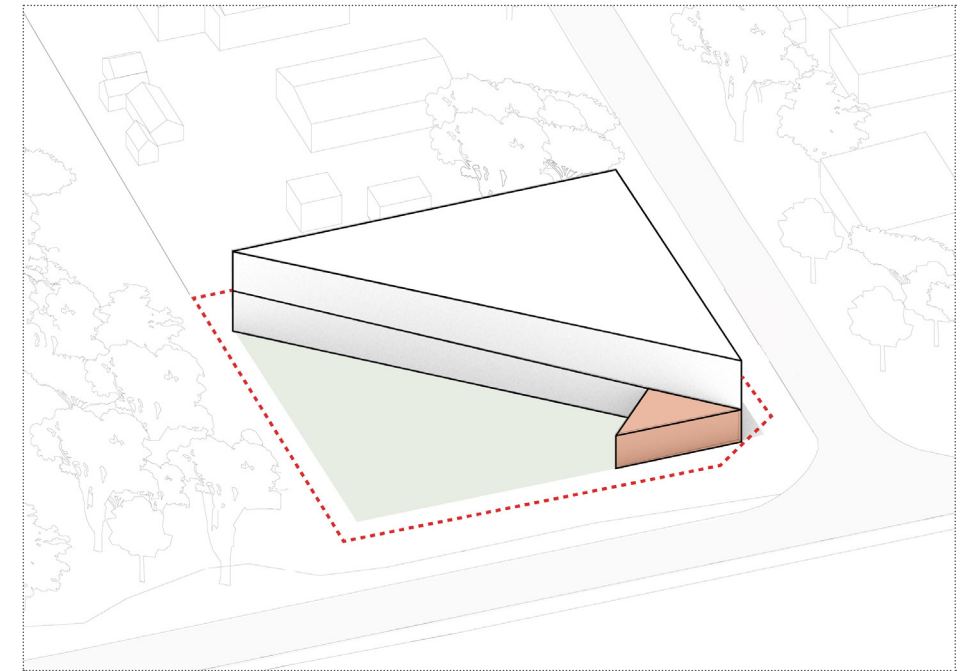




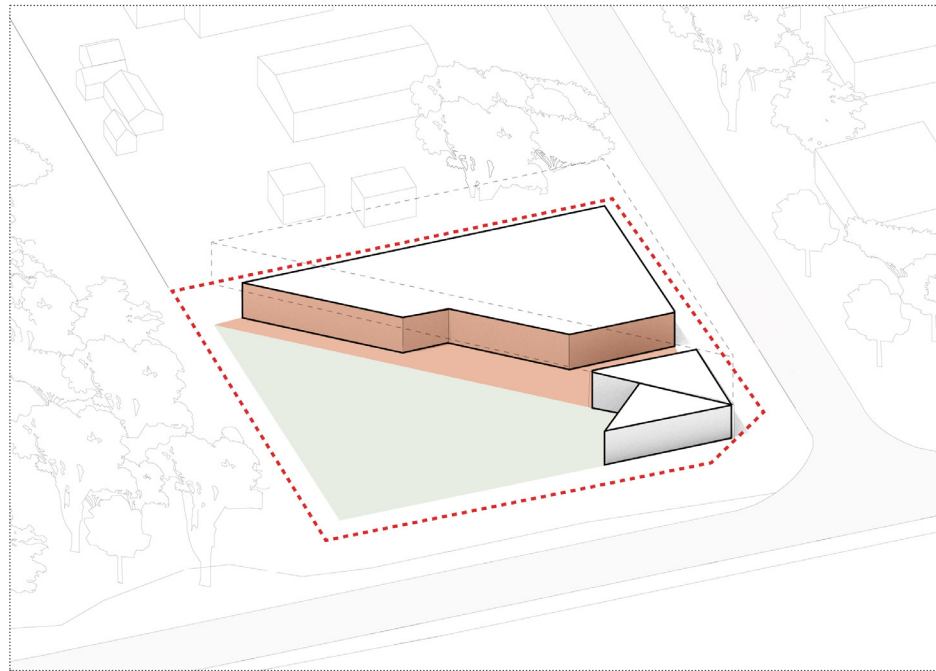
Existing Conditions



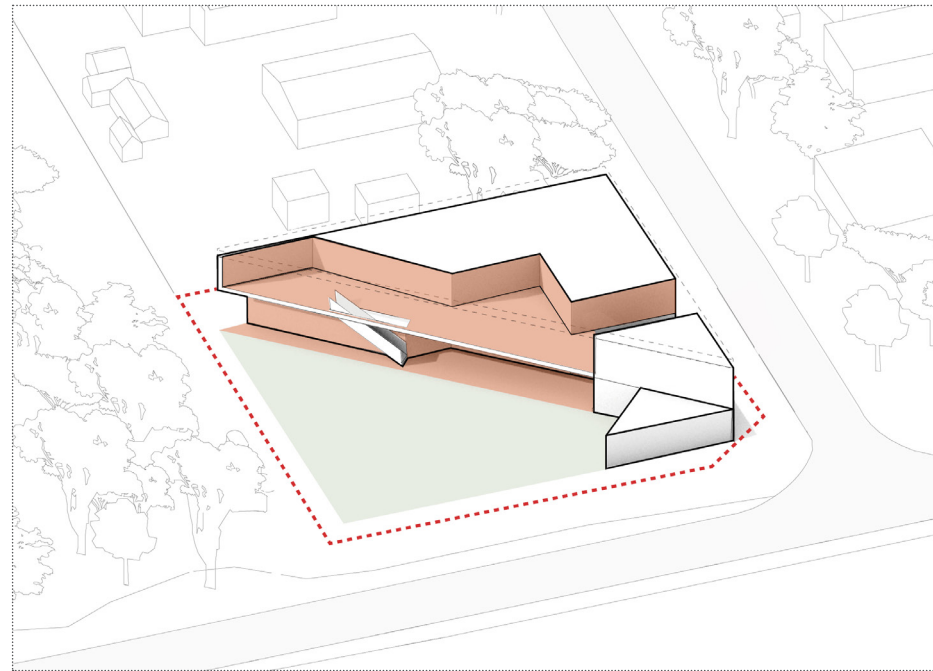
Maximise public space & program



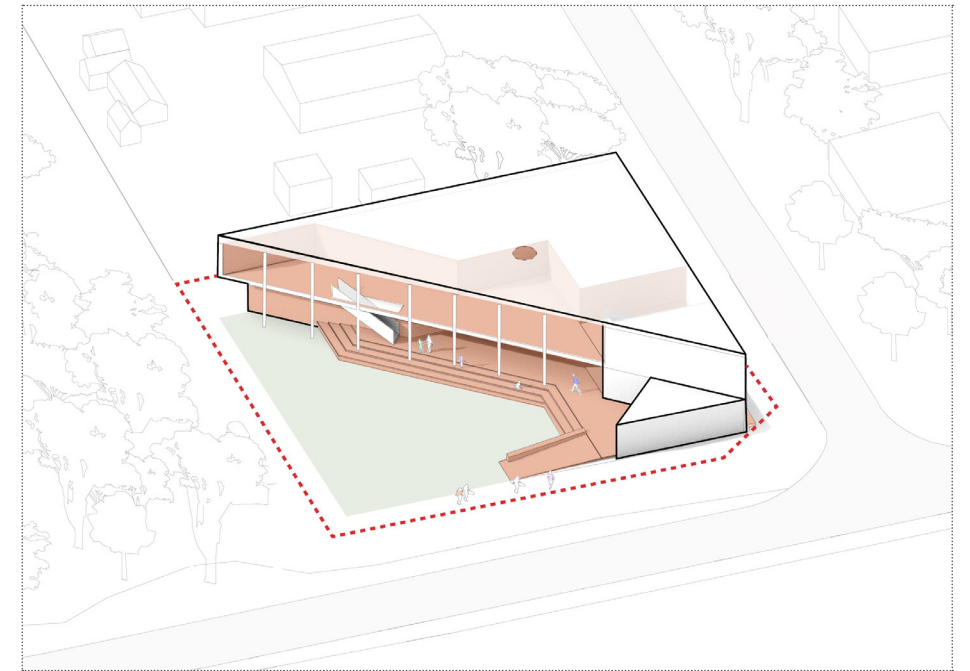
Corner activation



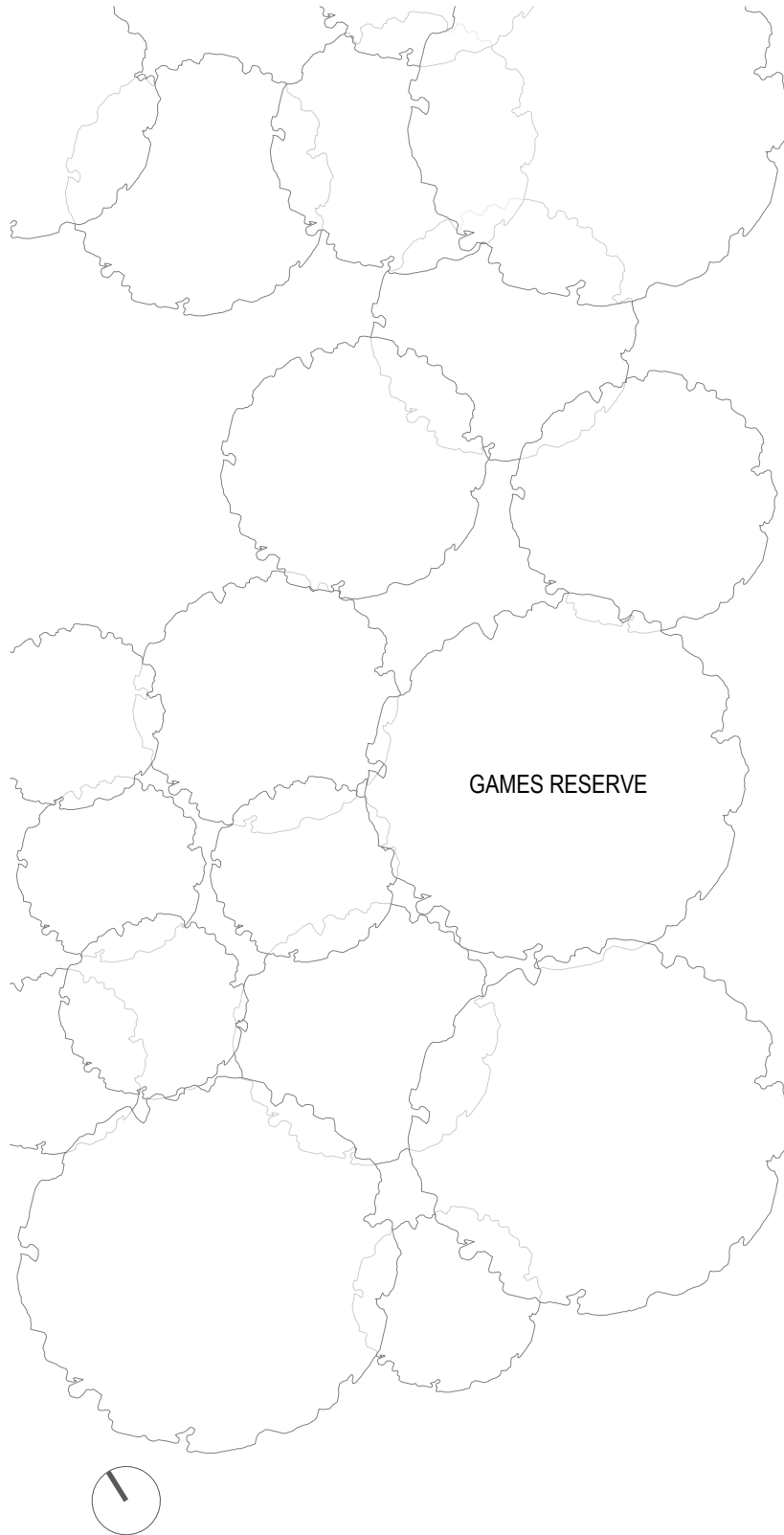
Ground level public realm



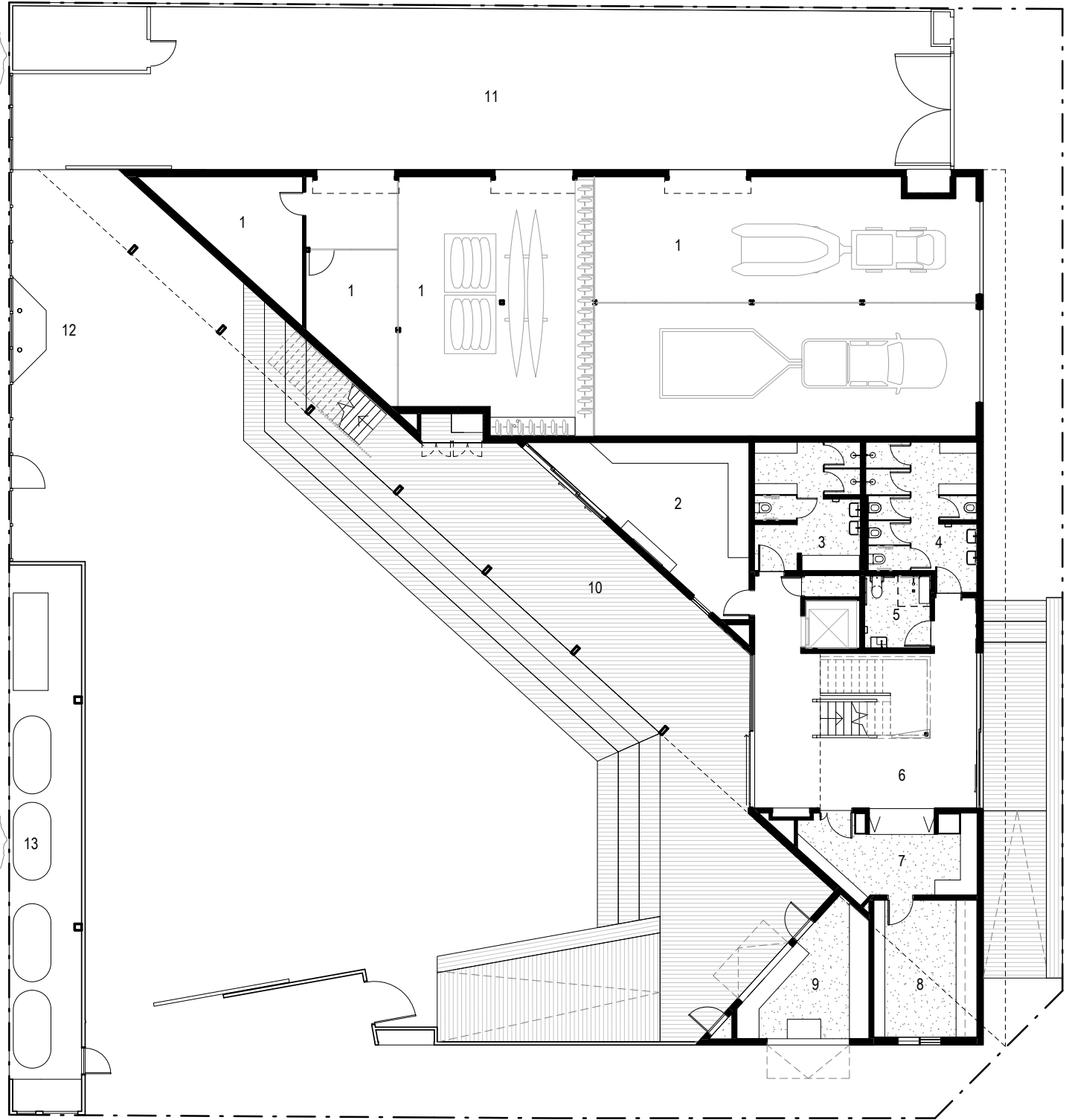
First level public realm



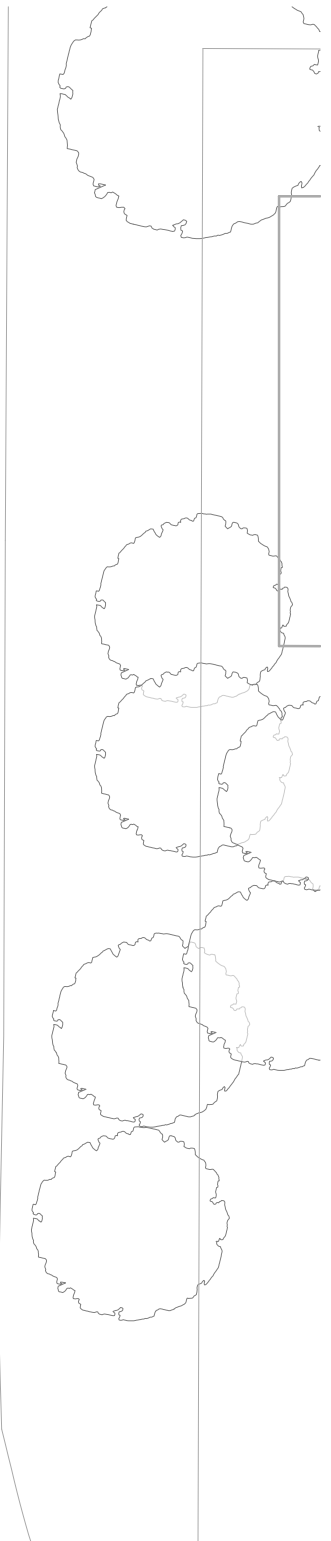
Civic verandah and terrace

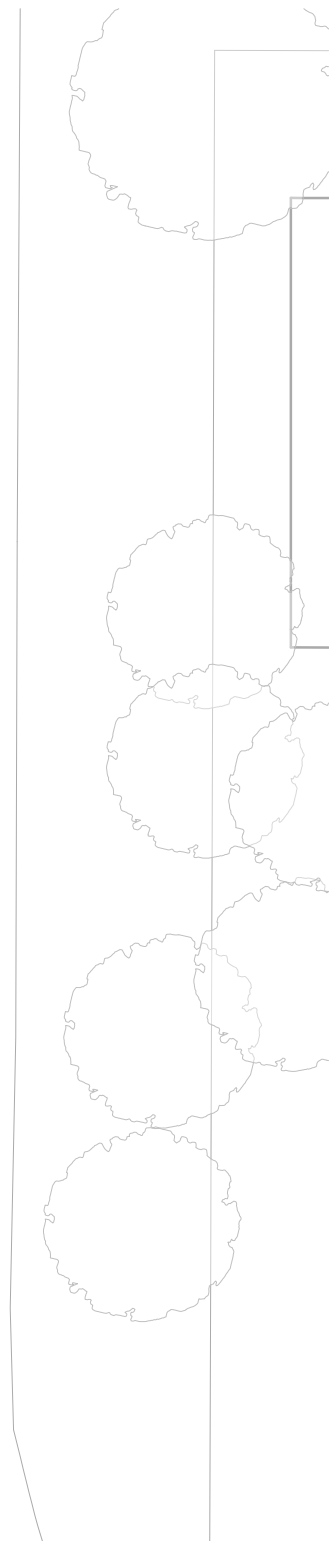
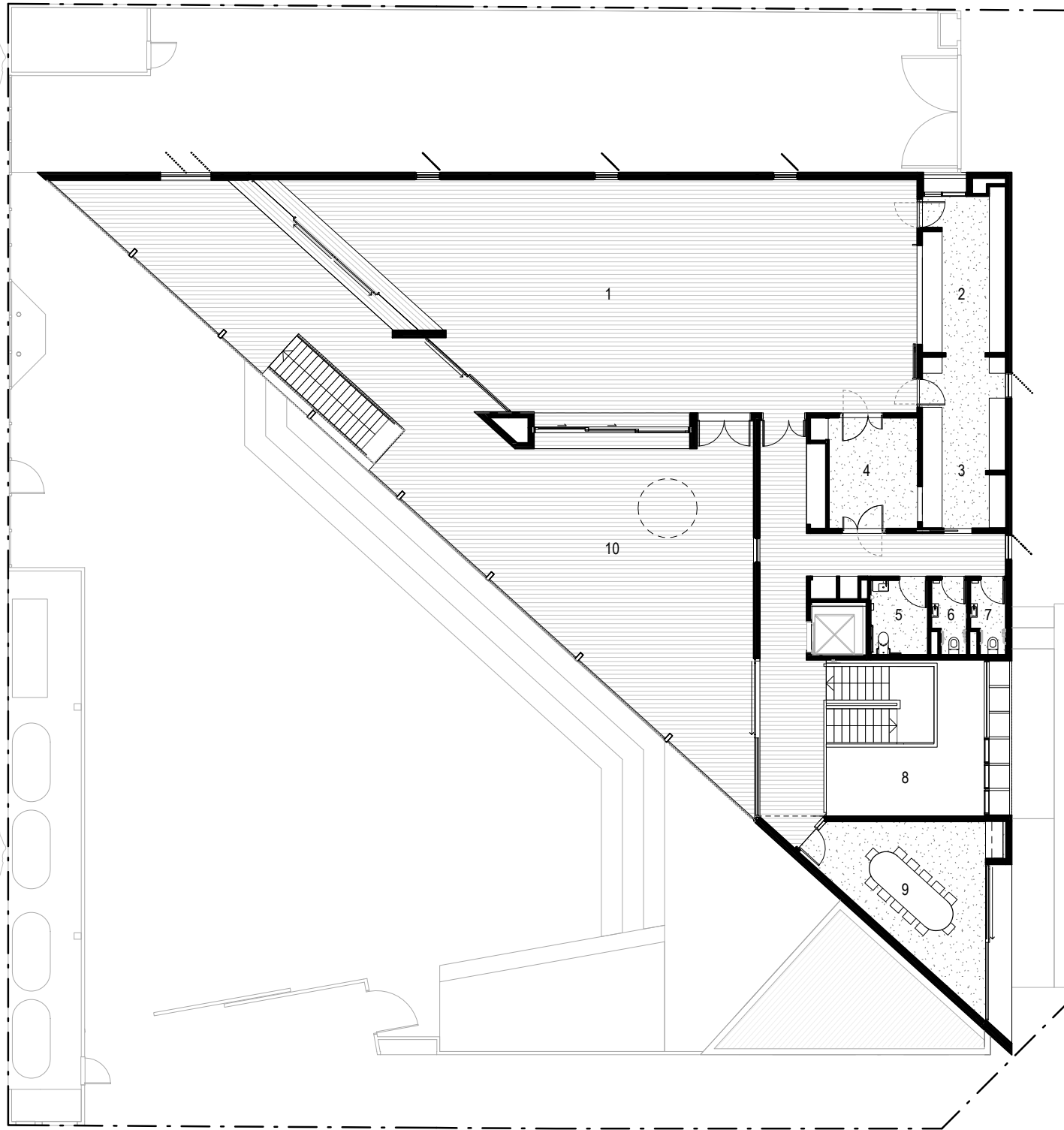
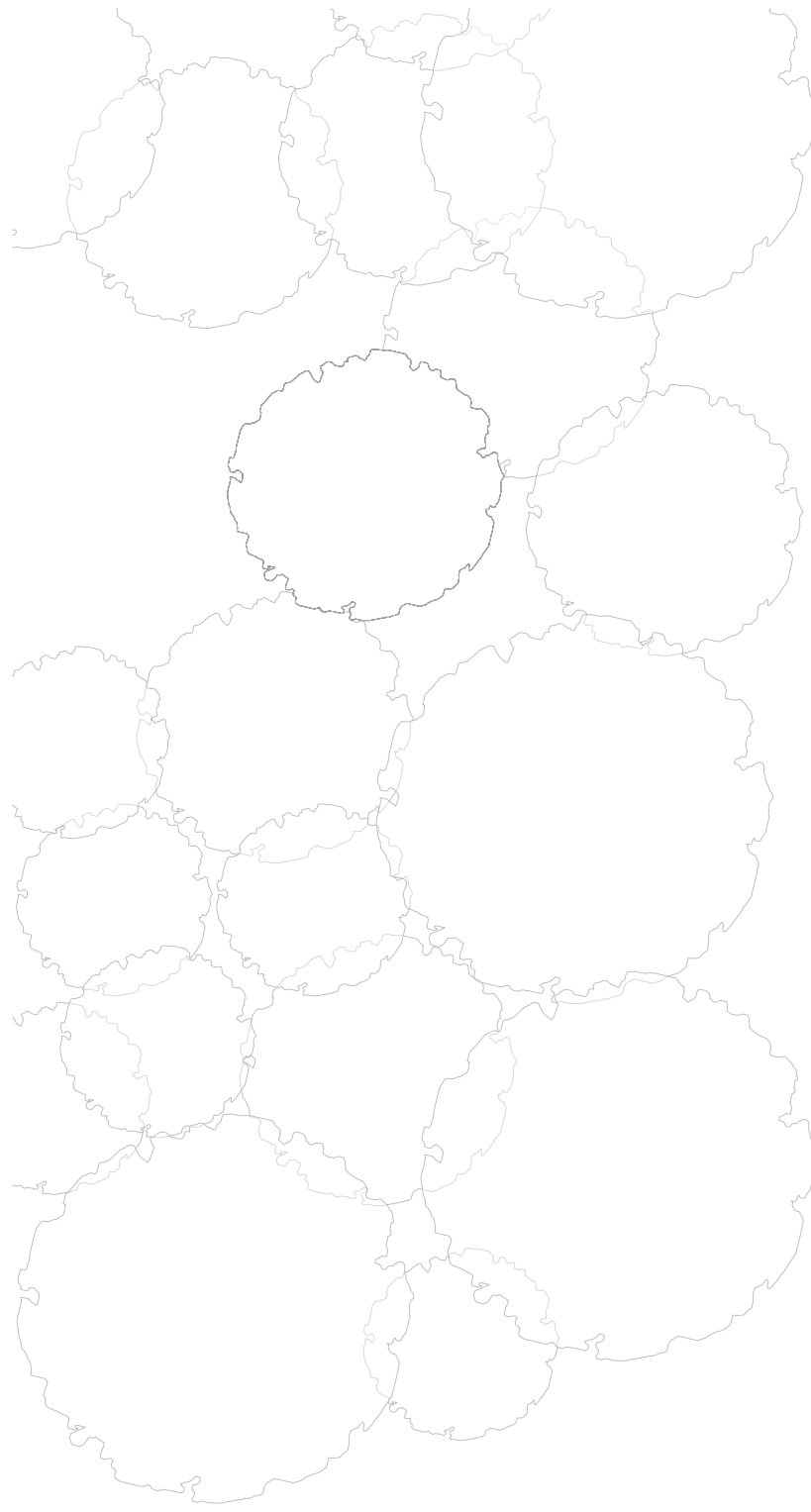


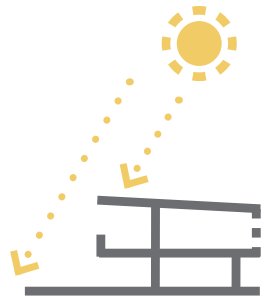
GAMES RESERVE



BUCKLEYS ROAD



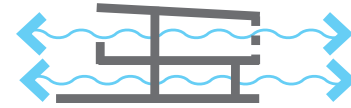
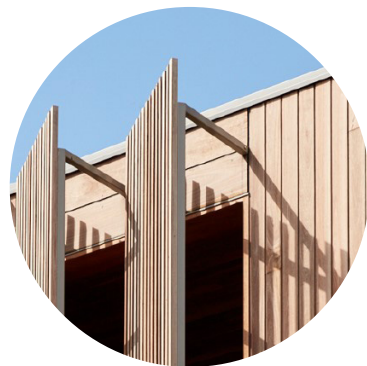




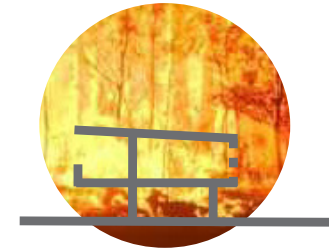
Deep verandah and
eave overhang



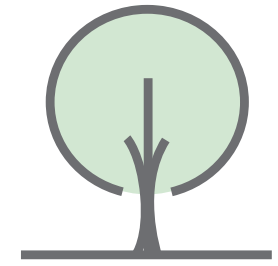
Daylight and
sunshading



Cross-flow
ventilation

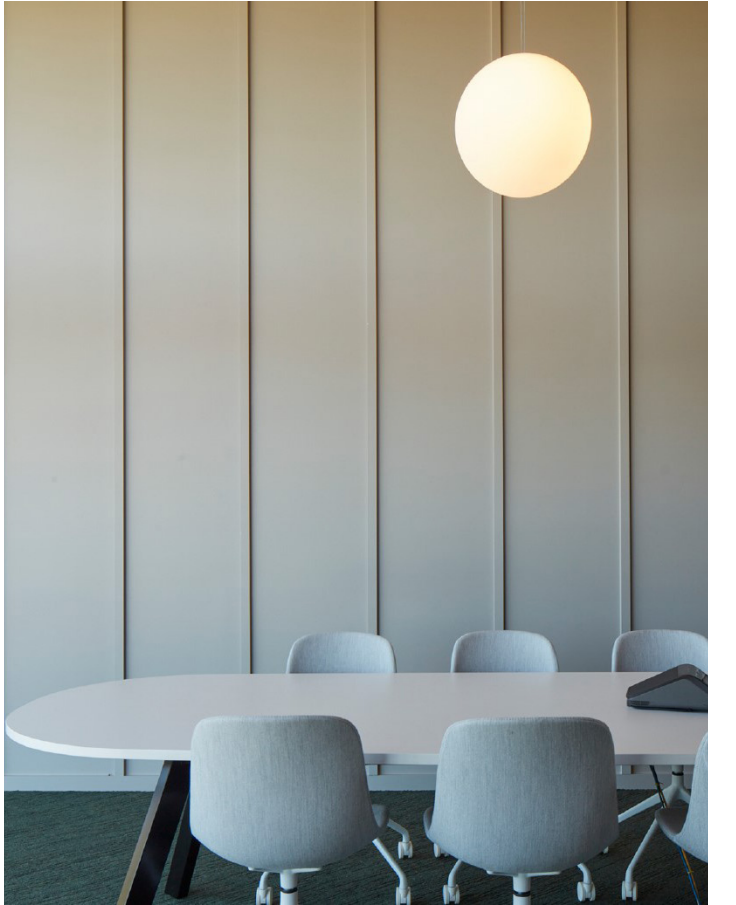
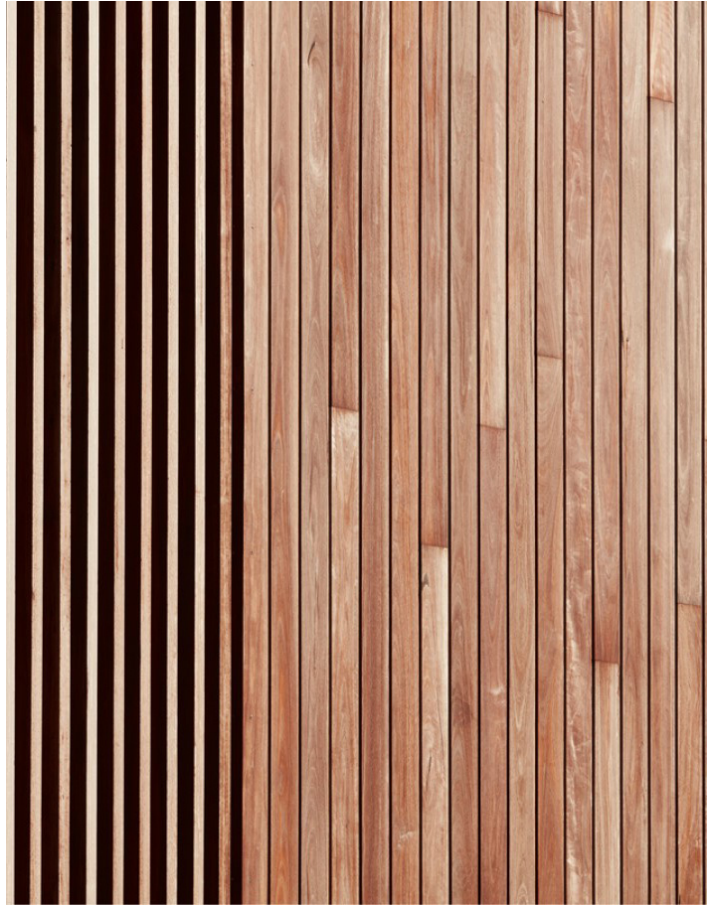


BAL 19 bushfire
resistance



Renewable material,
reduce carbon footprint















POINT
LONSDALE
SLSC







WATER METER

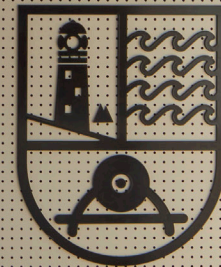




Point Lonsdale Surf Life Saving Club acknowledges the Traditional Owners of these lands, waters and skies, the Wadawurrung People of the Kulin Nation.

We acknowledge and respect their continuing connections to their lands, waters, skies, culture and the contribution they make to the life and spirit of our community.

We pay respect to their past and present Elders and their emerging leaders, and extend this respect to all Aboriginal and Torres Strait Islander peoples.















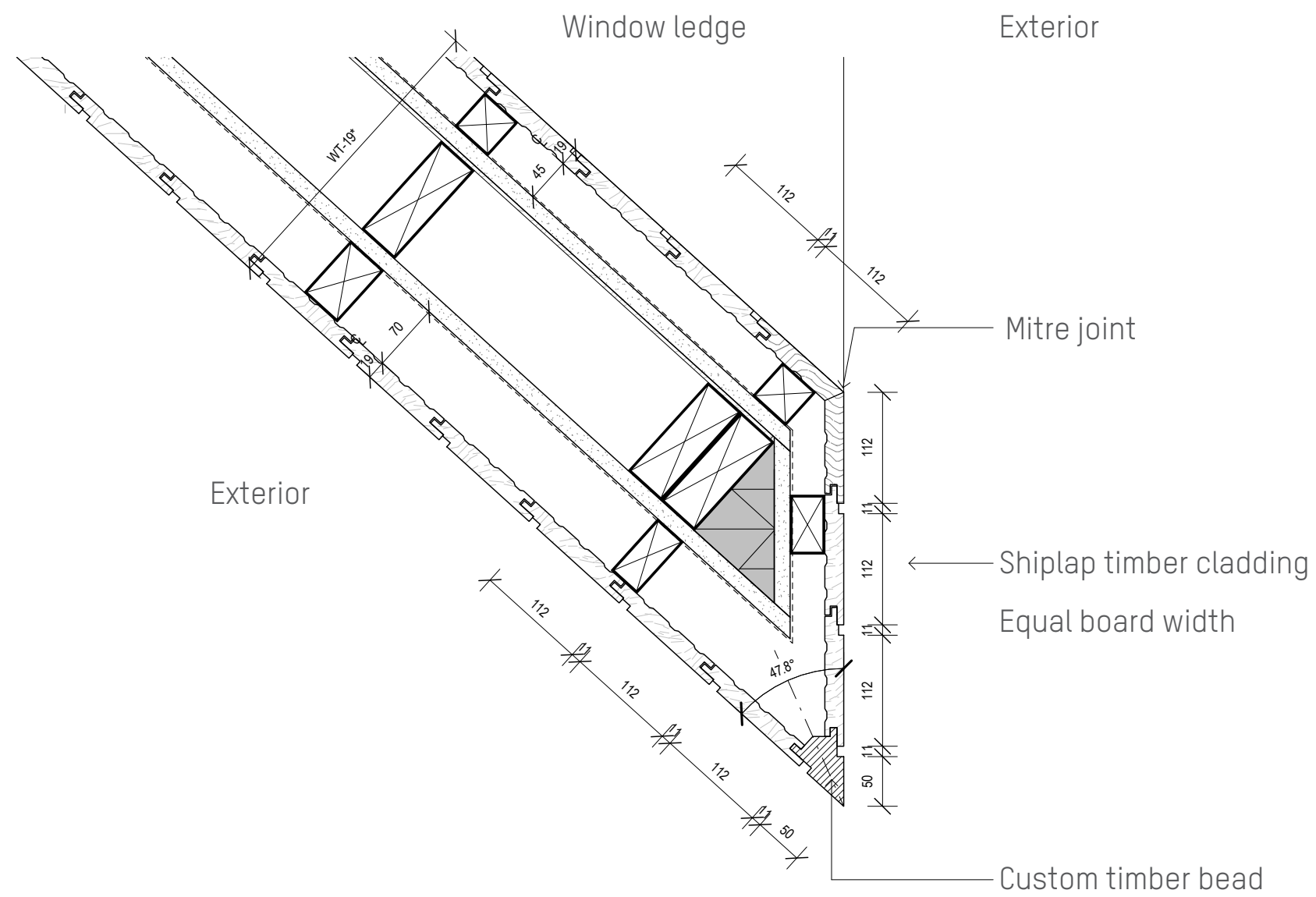














POINT
LONSDALE
SLSC